



Internal Driver T5 LED TUBE

LED T5 Tube

L60G

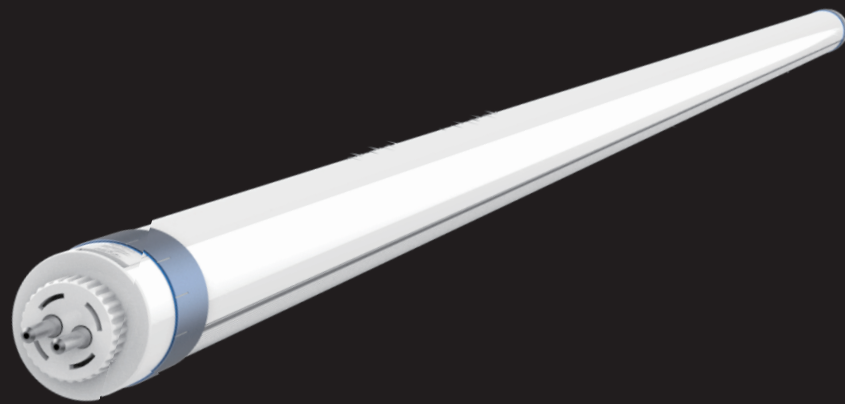
- Universal Application



5 years warranty



RG0

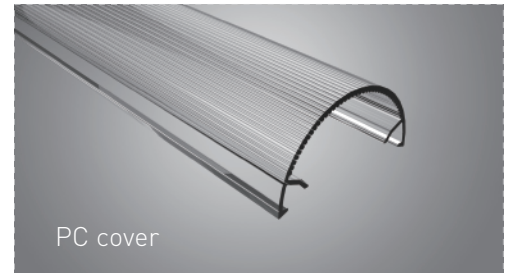
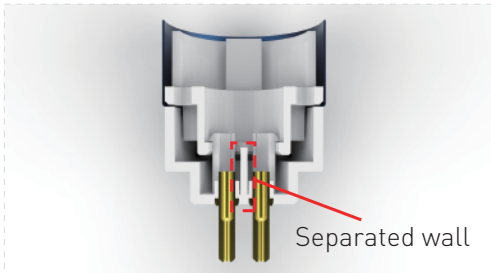
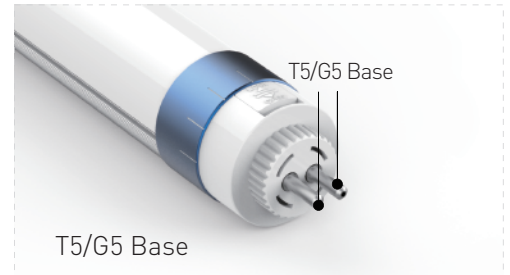
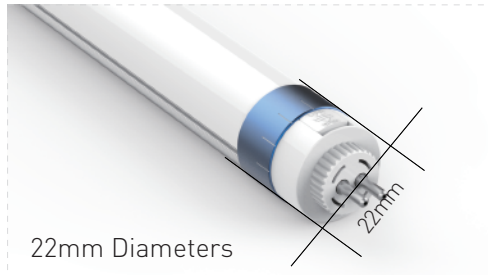
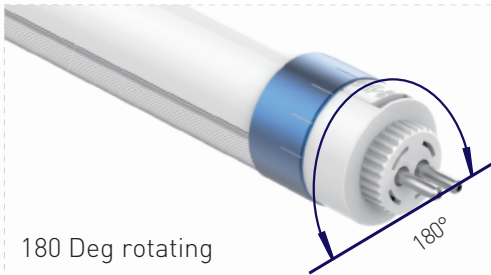


Features

- SDCM 3 or 6
- Up to 200Lm/w
- 180°rotated cap
- CRI>80 or CRI>90
- Non-flicker available
- T6 tube with T5 base
- Up to 70% energy saving
- Standard 5- year warranty
- Standard 69,000 hours (L80B10)
- Wide use in commercial and industrial area

(Applying)

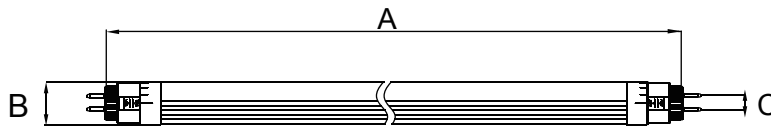
 Rated voltage 220-240V Frequency 50-60Hz $\begin{matrix} +40^{\circ}\text{C} \\ -20^{\circ}\text{C} \end{matrix}$



Application

- OFFICE
Corridors and stairways, Meeting rooms, Entrance areas,
Open-plan offices, Offices, Sanitary areas
- EDUCATION
Classrooms, Cafeteria, Auditorium, Sports halls
- HEALTH & CARE
Normal care, Intensive care, OR sector,
Examination rooms, Sanitary areas
- SHOP & RETAIL
Shopping mall, Supermarkets, Retail stores
- ARCHITECTURAL
Exhibition center, Library, Art Museum
Concert hall, Museum

Product Dimension



Model NO.	Size A(MM)	Size B(MM)	Size C(Base)
L60G 600MM	549	Φ22	G5
L60G 1200MM	1149	Φ22	G5
L60G 1500MM	1449	Φ22	G5

Parameter

Model NO. / Length	Power (W)	(Frosted Cover)Lumens	
		170lm/W	180lm/W
L60G/600MM	9	1530	1620
L60G/1200MM	12	2040	2160
L60G/1200MM	18	3060	3240
L60G/1500MM	24	4080	4320

 Dimmable
  Emergency
  Motion sensor

Notes:

- Frosted cover is 5Lm/W less than clear cover, above lumens based on 4000K Ra : 80
- All values in +25°C ambient temperature, luminous flux tolerance +-5%, output power tolerance +-5%.

Light Source : 2835 SDCM<3 or 6

CRI Range : 80 / 90 / 95

CCT Range : WW(3000K) NW(4000K) DW(5000K) CW(6500K)

AC Input : 220-240V 50/60Hz

L80B10 @Ta 25°C : 69000h L80B50 @Ta 25°C : 78000h

Beam Angle : 120°

Light Efficiency : 170Lm/W, 180Lm/W, 190Lm/W

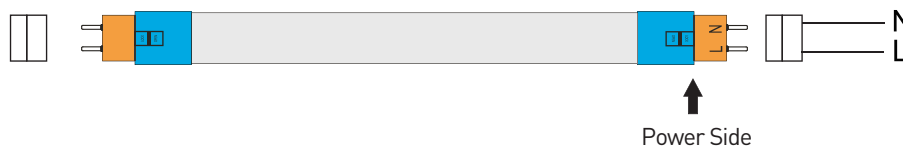
Size(mm) : Φ22

Recommended Installation Height : 2-15M

PF:≥0.93 THD<20% Power Efficiency:≥0.90

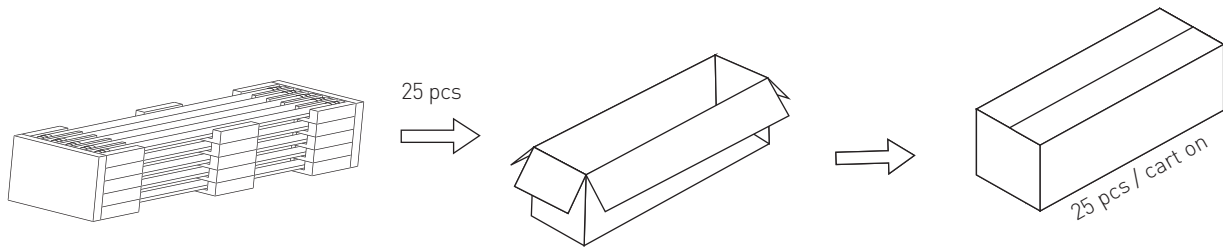
Temperature : (Storage : -40~+85°C) (Operating : -20~+40°C)

Standard Installation



Note: Before installation please make sure the power is turned off

Packaging



T6 Length	Type	Single Box	Pcs/ctn	N.W.(kg)	G.W./ctn(kg)	Meas(mm)
600MM	TUBE	1	25	3	3.71	636*212*220
1200MM	TUBE	1	25	5.5	6.7	1236*212*220
1500MM	TUBE	1	25	6.5	7.9	1536*212*220

Attention

This specification is for reference only, we reserve the right to change without notice. If you need the updated info, please contact local distributors or visit our website at <http://www.ervan.cn>

This product is non-resistant to some chemical substances, please contact the manufacturer for the details.

ERVAN reserves the right of final explanation.